

Ben - when he was
a 3 day old embryo





A female hormone crystal

A new beginning - with Beacon CARE Fertility

The Beacon CARE Fertility clinic in Dublin is a joint venture between Beacon Medical Group and CARE Fertility. Beacon Medical Group is one of Ireland's leading healthcare providers, delivering a visionary approach to healthcare in Ireland. CARE Fertility is one of the world's leading providers of fertility treatments.

CARE Fertility has helped many thousands of couples to become parents in the years since our involvement in the birth of the very first IVF baby in 1978 (Professor Simon Fishel, Managing Director of CARE Fertility, worked on the pioneering team with Sir Bob Edwards at Cambridge). The science surrounding fertility healthcare has advanced enormously since then, with new techniques and procedures becoming available all the time, many of them pioneered by the CARE Fertility team.

Beacon Medical Group is delighted to bring CARE Fertility's expertise to Beacon Medical Campus because it means that Irish patients now have local access to all the latest cutting edge techniques available in IVF together with the highest standards of patient care associated with both Beacon Medical Group and CARE Fertility.

In the following pages we will tell you something about our experience, our people, our range of treatments and how, at Beacon CARE Fertility, we can offer you a new beginning.

CAREfertility - leading the way for over 3 decades

Follow this timeline throughout our brochure to discover the developments in fertility that members of the CARE Fertility team have pioneered

1975	1978	1980	1981
Simon Fishel joins Sir Bob Edwards' team at Cambridge	Sir Bob Edwards leads the pioneering team responsible for the birth of Louise Brown, the world's first IVF baby	World's first IVF clinic opens led by Edwards, Steptoe, Fishel and Webster	First male factor patients treated

A world of difference - a brief introduction to CARE Fertility

CARE Fertility is a unique organisation. Not only are we a group of fertility clinics but we are the largest integrated team of specialists dedicated solely to fertility management and assisted reproduction. We don't do anything else. All of our considerable experience and resources are exclusively devoted to helping infertile people have children.

Leading the way

We help to drive up the quality of fertility healthcare by continually developing new techniques and procedures to assist more and more people.

- It was a member of CARE Fertility who first pioneered successful sperm microinjection and brought ICSI to the UK.
- We pioneered the Array CGH technology for egg screening in IVF and were the first to introduce egg screening through Polar Body Array CGH, making it possible to test the eggs in an IVF cycle, evaluate all their chromosomes and select only the most viable for use in treatment, maximising the chance of an on-going and healthy pregnancy.
- We remain one of only a handful of European teams licensed to screen embryos for chromosomal disorders.
- We were one of the first European fertility clinics licensed to perform specialist tests such as Pre-Implantation Genetic Diagnosis (PGD) and the first to offer HLA Tissue Typing.
- CARE Fertility was the first UK clinic to offer Reproductive Immunology. Today our RI programme is available through all of our main clinics, including Beacon CARE Fertility in Dublin, and helps couples worldwide overcome problems with repeated IVF failure and recurrent miscarriage.

Investment in research

CARE Fertility is committed to pushing forward the quality and reliability of treatment.

- CARE Fertility established the charitable trust, The Rachel Foundation, for research into improving patient treatment, protecting those who may become infertile in the future and helping those who cannot yet be treated.
- We undertake research programmes licensed by the HFEA* and work with research scientists around the world striving towards treatment solutions for the future.
* Human Fertilisation and Embryology Authority
- Our team collaborates with many renowned organisations such as the University of Chicago, the Genesis Genetics Institute in Michigan, Liverpool John Moore's University, and the University of Sheffield, in order to offer the best solutions to patients.

Unmatched experience

CARE Fertility is one of the largest independent providers of fertility treatments in the world.

- We have a unique team of dedicated fertility healthcare professionals and we provide the complete range of treatments and techniques from the simplest tests to the latest technologies.
- Our embryologists have more experience and innovative published work in the field of micro injection technology for human conception than any other European team.
- Our staff have been invited by the World Health Organisation, governments and universities to introduce IVF to many institutions across the world.
- Working together, our dedicated team overcome some of the most complex fertility problems. They have consistently achieved outstanding pregnancy results.

1982
Britain's first
IVF twins

1982
World's first baby delivered after
intrauterine sperm/egg transfer

1984
Britain's first
IVF triplets

1984
World's first birth after
blastocyst transfer

Beacon CARE Fertility

The Beacon CARE Fertility clinic is a joint venture between Beacon Medical Group, one of Ireland's most successful healthcare providers and CARE Fertility, a world leading fertility treatment provider. The clinic will provide the full spectrum of assisted conception technologies, together with the highest standards of patient care.

Caring for you as individuals

We believe that no two patients are alike. That's why everyone we help is treated uniquely according to their individual circumstances and conditions.

- ✓ Beacon CARE Fertility provide personalised solutions for fertility problems in a caring and supportive environment.
- ✓ The nurses on the team are experienced and specially trained in caring for patients undergoing fertility treatment. Beacon CARE Fertility nurses offer day-to-day guidance and support to patients.
- ✓ Beacon CARE Fertility take pride in spending time to answer your questions and deal with any concerns you have.
- ✓ We provide an emergency telephone service to answer queries for patients undergoing treatment. This service is available from 8am - 11pm daily, including weekends.

Results

Ultimately we are judged by our results. We will do everything we can to help you achieve a pregnancy.

At Beacon CARE Fertility, we aim to help everyone*, regardless of age or the nature of their fertility problem.

We always remain completely focused on the individual needs and treatment of every patient. We never forget just what treatment means to you.

* Clearly there are biological factors and regulatory recommendations which make it impractical to offer treatment outside certain age bands.



“ At CARE Fertility our investigations are individual to each patient and always thorough, ensuring that treatment plans are tailored to give everyone the best chance. I've worked in this field for 25 years and it's still an enormous privilege to help people have a baby. ”

Ken Dowell Group Director

1987

World's first babies, twins, born after using frozen embryos from donated eggs

1988

World's first baby born after home monitoring of fertility treatment

1989

Britain's first babies, twins, born after host surrogacy

1990

World's first baby, born after microinjection

Treatments

- giving you the very best chance

With Beacon CARE Fertility you have access to the best in science, modern technology, clinical and nursing practice. So whichever patient group you belong to, first or repeat treatment cycle, our promise to you is that calmly, discreetly, professionally we'll always offer you the very best chance of becoming pregnant.

Ovulation Induction

If ovulation is not occurring regularly, drugs can be used to stimulate ovulation. Monitoring may be required to ensure that intercourse is timed appropriately.

Intra-Uterine Insemination (IUI)

This procedure may be offered when the woman has healthy fallopian tubes, ovulates satisfactorily and there are no problems with the sperm, so called 'unexplained infertility'.

The technique involves the introduction of prepared sperm directly into the uterus.

In Vitro Fertilisation (IVF)

IVF was originally developed to help women with damaged or absent fallopian tubes, which prevent the sperm from meeting the egg. However, it is now used to assist in many other circumstances, including unexplained infertility and where there is a degree of sperm compromise (referred to as male factor infertility).

The IVF procedure, in outline, involves the use of drugs to stimulate the growth of follicles, which contain the eggs, recovering and inseminating the eggs with sperm and transferring the resulting embryos into the uterus.

Extended Culture/Blastocyst Transfer

Pregnancy rates may be improved in some women where embryos are transferred to the womb at the blastocyst stage which is 5-6 days after insemination. This procedure involves culturing the embryos to develop in the laboratory to a more advanced stage before placing in the womb.



Some of the Lab team at CARE Fertility Manchester
from left to right: Karen, Alison, Kathryn and Natalie

Intracytoplasmic Sperm Injection (ICSI)

Intracytoplasmic Sperm Injection is a technique that involves the injection of a single sperm directly into the centre of the egg using a fine glass needle. It is used to aid fertilisation in cases of:

- severe male-factor infertility where the sperm quality is unsuitable for conventional IVF
- where sperm has been surgically recovered
- where a previous IVF treatment did not result in fertilisation
- following egg freezing (where it overcomes the problem of the hardening of the outer shell of the egg following the freeze)
- cycles where genetic testing of the egg is being carried out

CARE Fertility scientists pioneered ICSI and remain at the forefront of developments in this area.

Surgical Recovery of Sperm

Sometimes sperm are not present in the ejaculate due to absence or blockage of the tube carrying the sperm from the testes. In these cases, minor surgery can be performed to obtain sperm from the reproductive tract, which is then used for ICSI.

1992

Britain's first SUZI treatment baby

1992

Britain's first 'sugar-drop' frozen embryo baby

1994

World's first CISS baby

1994

Britain's first triplets born after host surrogacy



Egg & Sperm Donation in the UK

All of the above procedures may be performed at CARE Fertility in the UK using donated eggs or sperm. If required, embryo donation can also be offered in the UK.

CARE Fertility operate a very successful egg donation programme with specially trained co-ordinators in Manchester, Northampton, Nottingham and Sheffield. Monitoring for treatments using donated eggs and sperm can be done at Beacon CARE Fertility in Dublin with procedures carried out at CARE Fertility in the UK.

Egg Freezing

This is a procedure where your eggs are frozen and stored.

There are a number of reasons why you may wish to freeze your eggs:

- ✓ concern re possible loss of fertility as a result of treatment for cancer
- ✓ concern re decrease in egg quality as a woman ages
- ✓ failure to retrieve sperm for use in treatment on day of egg collection

Sperm Freezing

Sperm can be preserved by freezing and used for treatment at a later time. Sperm can also be frozen prior to vasectomy if required.

Embryo Freezing

Embryos not transferred to the womb may be frozen (cryo-preserved), according to the wishes of the couple. If appropriate, these embryos might be suitable for transfer at a later stage.

MERC (Multiple Ejaculation Resuspension and Centrifugation test)

This technique has been developed at CARE Fertility in order to concentrate small numbers of sperm from multiple semen samples. This procedure may be particularly useful for men with only occasional sperm, and as a trial before embarking on surgical sperm recovery.

1996

World's first testicular spermatid baby

1996

UK's first baby using maternal host grandmother

1997

World's first pre-cancer treatment recovery of testicular material from prepubescent boy

1999

World's first IVF baby for cystic fibrosis patient

Cutting edge treatments at Beacon CARE Fertility

Beacon CARE Fertility can offer you so many cutting edge treatment options including Pre-Implantation Genetic Screening, which was pioneered by CARE Fertility, or our Reproductive Immunology programme.

Beacon CARE Fertility will always take a uniquely focused and completely personalised approach to your treatment.

Chromosome Screening/ Pre-Implantation Genetic Screening

In 2008 CARE Fertility pioneered the use of Array CGH to screen the eggs of patients undergoing IVF. The first case, a 41 year old woman with 13 previous failed cycles of IVF at other clinics, successfully conceived through CARE Fertility using this revolutionary approach. Since then CARE Fertility has continued to develop the use of chromosome screening technology with the expectation that we can achieve significant benefits for patients including:

- ✓ markedly improved IVF success rates
- ✓ a reduction in the number of miscarriages
- ✓ a reduction in the cost of achieving a viable pregnancy
- ✓ a reduction in the incidence of multiple pregnancies (by transferring fewer but 'competent' embryos)

Beacon CARE Fertility can recommend the most suitable approach to chromosome screening for each individual patient.

Embryoscope Monitoring System

The Beacon CARE Fertility clinic has an embryoscope which is an advanced incubator providing instant assessment of embryonic development history. Embryos are continuously monitored in a strictly controlled environment and, with an internal 'eye', observed by time lapse microscopy. Beacon CARE Fertility is one of only a small number of clinics worldwide to use this advanced incubator which allows embryologists to witness embryonic cell division and assess which embryos are most suitable for transfer.



1999
World's first baby following Multiple Ejaculate Resuspension Centrifugation (MERC)

2001
UK's first licence awarded to CARE Fertility for PGD and HLA tissue typing

2002
Embryo chromosome (aneuploidy) screening licence awarded

2004
First NHS-funded treatment for PGD and HLA tissue typing



Reproductive Immunology

The Reproductive Immunology Programme at CARE Fertility helps couples worldwide with recurrent IVF/ICSI failures and recurrent miscarriage. CARE Fertility have more experience than any other European clinic with immune issues affecting reproductive health. Our clinicians and embryologists are skilled in dealing with immune issues, designing and implementing highly individualised treatment plans for every patient to maximize the chance of success.

Patients in Ireland are able to access Reproductive Immunology treatment through Beacon CARE Fertility.

For a successful pregnancy to occur, the woman's immune system must accept the embryo. The embryo must escape the usual immune surveillance. If this special immunity fails, then the process by which the embryo implants, and is not rejected, falters. Successful implantation may therefore not occur, and if implantation starts, the risk of miscarriage may increase.

At Beacon CARE Fertility, we believe that with treatment through our Fertility RI Programme we can give a certain group of patients, for whom this treatment is appropriate, the very best chance of success. Reproductive Immunology is available at all of our main clinics.

Patient Story

Stacy and James with twins Harry and Libby -
born following immune treatment at CARE Sheffield

“ I first became pregnant in 2007 but tragically lost the baby within weeks. Of course I was really upset but I thought that these things do happen to people. I put it down to luck - I didn't realise there was something wrong.

Then followed two rounds of IVF, at the end of which I'd suffered another two miscarriages. It was heartbreaking for us. All my friends were having babies and I just thought that it was never going to happen for us. All I wanted was to have a family! I was adamant that there was something wrong but the reason for my miscarrying wasn't identified.

Then a friend told me she'd read something about a condition whereby a woman's body can have too many of the so-called natural killer cells which support the body's immune system.

I did some research and found that CARE Fertility provide a Reproductive Immunology programme and I contacted the Sheffield clinic. They ran a series of tests which showed that I have very high levels of natural killer cells which were attacking the embryos and causing my body to reject them. Dr Shaker at CARE Sheffield advised treatment with CARE's Reproductive Immunology Programme. I was given three doses of intralipids, administered through a drip. It worked and I gave birth to Harry and Libby in January 2011. ”

2006

First UK comprehensive PGD molecular biology lab for more than 200 genetic tests

2006

First baby born after PGD screening for Gaucher's disease

2008

Array CGH -
World's first pregnancy

2009

World's first Array CGH baby born

CAREmaps

- with Time Lapse Embryo Imaging

CAREmaps is a whole system designed to maximise the chances of success in IVF. CAREmaps includes three important variables which, when used together, enable our embryologists to select the embryo which has the highest potential for a successful pregnancy.

CARE's specific morphokinetic algorithms:

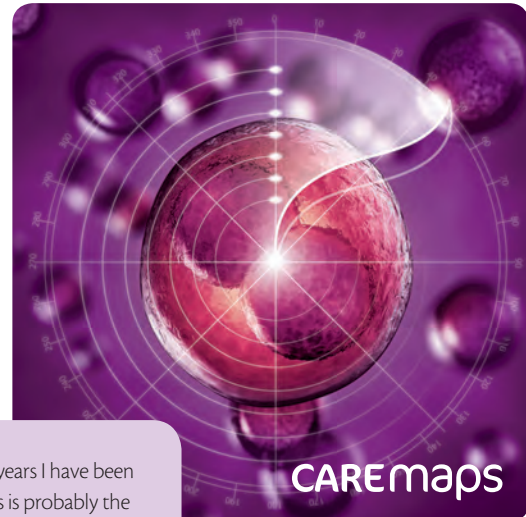
These are CARE's unique calculations about what the embryo should be doing at specific points in time. Using morphokinetics, we have developed a risk classification model to predict which embryo has the highest potential for successful implantation.

Time Lapse Imaging:

This allows us to safely and continuously monitor embryos and to observe their developmental patterns closely. Instead of standard incubation which gives us one look at an embryo each day, using time lapse imaging we now have hundreds of images each day.

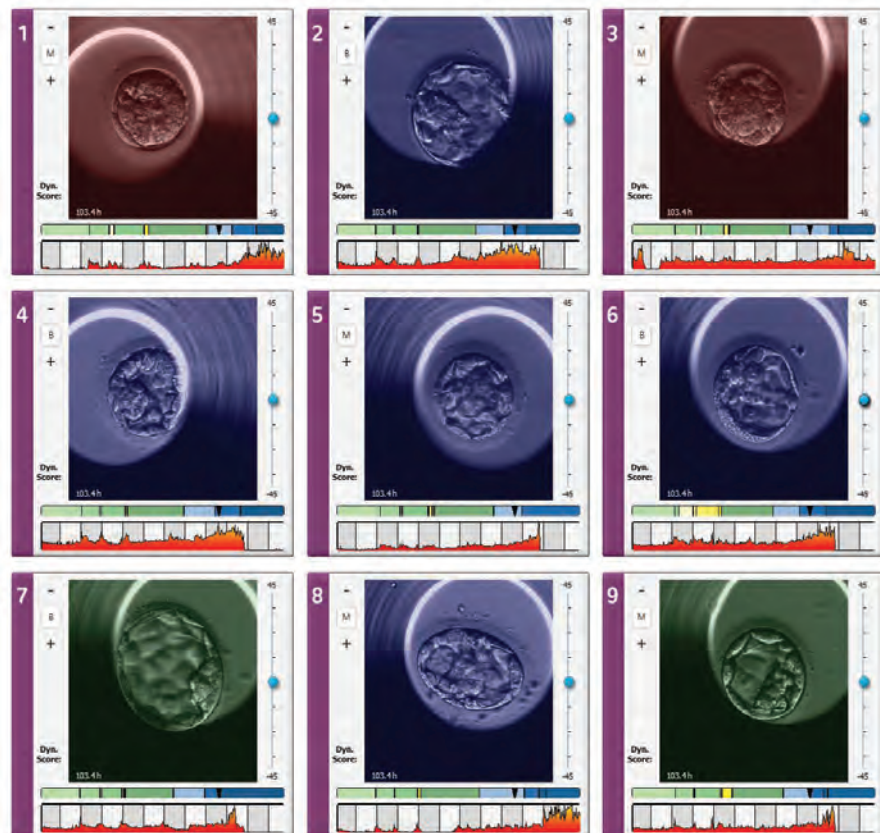
Closed incubation:

This provides the optimum, uninterrupted conditions for developing embryos.



“ In the 35 years I have been in this field, this is probably the most exciting and significant development that can be of value to all patients seeking IVF. ”

Prof Simon Fishel



2010

2010 Blastocyst Chromosome Screening - UK's first baby born

2010

First multi-factorial genetic chromosome tissue typing and translocation analysis of embryos in an IVF cycle

2010

First UK based Total Treatment Cycle for PGD and HLA Tissue Matching - Fanconi Anaemia

CARE Support - at every stage

Our motivation is simple - to help all of our patients have a healthy baby

CARE has always had a strong reputation for our caring and supportive approach to patients going through fertility treatment. All members of the CARE team - Clinical, Scientific or Administrative - are focused on providing support, and to paying attention to the individual needs of each patient. We will help you move forward in your treatment by constantly reviewing and reflecting on your particular circumstances. We will always be transparent in everything we do, providing you with clear and comprehensive information about your condition and the various options available to you. All of us at CARE will do everything we can to make your IVF journey a positive one.

CARE Bulletin Board

Since the CARE Bulletin Board was introduced, tens of thousands of messages have kept people in touch with each other and provided patient to patient information and support. Open 24 hours a day, it is a fantastic resource should you want to 'chat', anonymously if you prefer, with others who are going through fertility treatment.

Counselling

Finding out that you have a fertility problem and going through treatment can be a stressful experience for you and your partner. We know how difficult it can be, so we look after your emotional as well as your physical needs.

A professional and confidential counselling service is available to you at any time before, during and after treatment.

You can attend with your partner or individually. Counselling is available at all main CARE clinics.

Patient Information Evenings

Patient Information Evenings provide the opportunity to meet members of the CARE medical, nursing, embryology and counselling teams on an informal basis. A presentation is given on what you can expect to happen in a typical treatment cycle. Call your nearest CARE clinic or visit www.carefertility.com for details of dates.

Rachel Foundation

The Rachel Foundation is a research-based charity that focuses on developing therapies for those who are rendered infertile as a side effect of medical treatment, as well as trying to improve treatment for infertile couples.

The Rachel Foundation, established by CARE, is named after biblical Rachel, wife of Jacob, whose infertility gave the first recorded cry for help (Genesis chapter 30, verse 1).

Donations to the Rachel Foundation have already gone towards funding for two research projects that have taken place at Liverpool John Moore's University, both aiming to maximise the chances of successful fertilisation.

“ By coming to CARE, you are placing your trust in us. And it's not just in our medical and technical skills but in our understanding of your emotional needs. We completely appreciate the magnitude of all the emotions involved in trying to have a child and we will do everything in our power to make it happen for you. ”

Simon Fishel

Simon



Simon with
Mark and Lucy

2011

First UK pregnancy following use of an embryo scope

2013

Introduction of CAREmaps
Time Lapse Embryo Imaging using
Morphokinetic Algorithms to Predict Success

Welcome to Beacon CARE Fertility

At Beacon CARE Fertility the team are all totally committed to achieving the best results for all of our patients.

Our innovative and pioneering approach is matched with skill and experience to give our patients the very best chance of achieving a pregnancy.

As a Beacon CARE Fertility patient, our aim is to make sure that you feel positive, hopeful, reassured and know that you're in good hands.

The Team



Dr Ahmed Omar
MBBch (Hons)
Medical Director



Dr Bartłomiej Kuczera
Consultant



Mr Ken Dowell
FRCOG
Group Director



Treasa Meehan
Clinic Manager



Ivy D'Cruz
Lab Manager



Andi Neary
Nurse Manager



Pauline Cullen
Commercial Director,
Beacon Medical Group

Directions to Beacon CARE Fertility

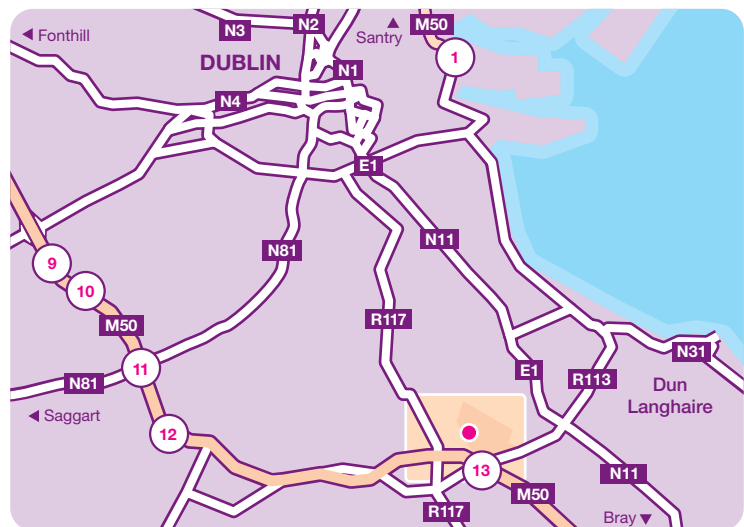
The clinic in Dublin is situated within the Beacon Medical Campus at Beacon Court, Sandyford, Dublin. It is ideally located in terms of city and nationwide access.

- It is adjacent to the M50 Dublin Ring Road
- It is easily accessible from Dublin airport
- It enjoys the benefits of the new LUAS line (Dublin's light rail system)

Extensive parking facilities are also available.

Coming from Leopardstown Racecourse direction

- Go around the roundabout and take the turn off for the Sandyford Industrial Estate
- Pass 'Woodies' on the left, keep going straight on
- At the T-Junction at the end of this road, turn left (signposted 'local traffic')
- Beacon Court is at the end of this road on the corner on your left
- Park in underground car park and follow signs to Beacon Medical Campus



Coming from the M50, Dundrum direction

- Take the exit for Sandyford/Dundrum
- Go straight through the first roundabout (signposted for Sandyford)
- Turn left on the second roundabout (which will have traffic lights)
- Turn right at the next set of traffic lights and take another right immediately
- The entrance to the car park will be on your right hand side

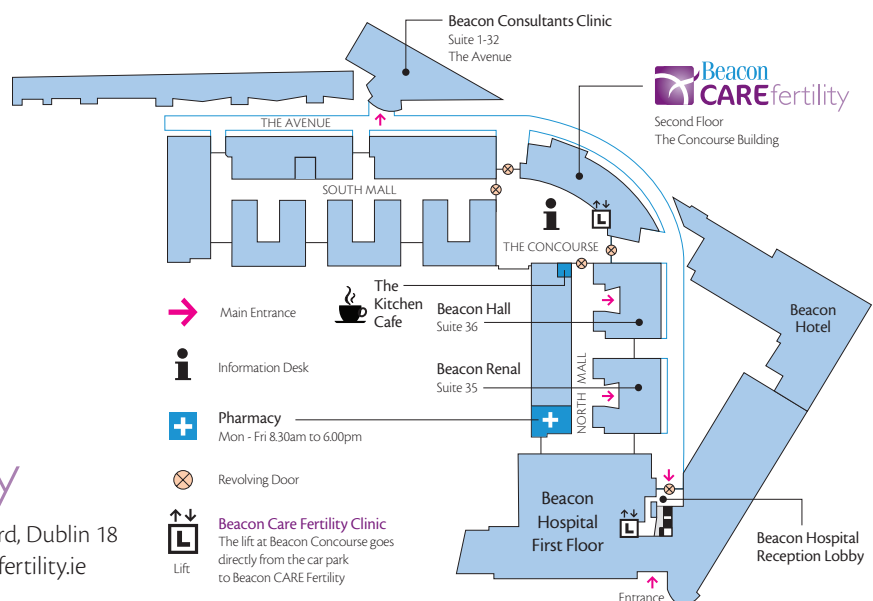


Coming from Dundrum Village via Kilmacud Road Upper

- Follow the Upper Kilmacud Road towards Sandyford Industrial Estate
- Turn right at the roundabout
- Continue straight ahead past St. Raphaela's School on your left
- At the T-Junction, (LUAS tracks), turn right
- The road then makes a sharp turn left. Continue along here to the first left (Mercedes garage on your right), Beacon Court is on your immediate right
- Turn right in to the underground car park



Beacon CARE Fertility, Beacon Court, Sandyford, Dublin 18
Tel + 353 (0) 1 293 2955 www.beaconcarefertility.ie



Beacon CARE Fertility Fee Schedule

We know that it can be difficult working out what your treatment might cost in advance - and one single price list of all procedures can be confusing. That's why we've split up our fee schedule in to six separate categories to make it easier for you to obtain an idea of the likely cost of the treatment which is relevant to you.

All of our treatment plans are individual to each patient and your Consultant will discuss everything with you at your Consultation and give you an individualised costing. If, in the meantime, you have any questions about the likely cost of your treatment, please call us on 01293 2955, we'll be happy to chat things through and answer any questions you have.

Consultations and Testing

€

CONSULTATIONS

Initial Consultation	175
First review Consultation following failed treatment at Beacon CARE Fertility	No charge
Review Consultation	120
PGD Consultation Package	250

TESTS

Semen Assessment Package	150
Screening Blood tests per partner (HIV/HEP B/HEP C/CPS6)	168
Detailed pre-treatment scan (including Antral follicle count)	110
Pregnancy Scan (not as a result of treatment)	110
Satellite Patient - Pre Treatment Scan	180
Satellite Patient - Pre Treatment Scan and Bloods	250

Fertility Treatments

Ovulation Induction	450
---------------------	-----

Artificial Insemination

IUI	850
-----	-----

IVF

IVF treatment cycle (including scans, theatre charges, anaesthetic for egg collection and review consultation)	4500
--	------

ICSI

ICSI treatment cycle	4900
----------------------	------

IVF Elective Freeze

Elective Freeze (IVF & Freeze) Does not include transfer.	4300
---	------

IVF RELATED SUPPLEMENTARY PROCEDURES

CAREmaps	900
Surgical Sperm Recovery - PESA/TESE (includes 1 year storage).	1200
Blastocyst Culture'	700
Endometrial Biopsy	350
Endometrial Scratch	350

REPRODUCTIVE IMMUNOLOGY

An Individualised Testing Plan will be discussed at Consultation and a costing given then.

Treatments using donated eggs - by Satelliting to the UK

€

MANDATORY SCREENING - Patients undergoing treatments, which involve the receipt of donated eggs or sperm, will be charged for the mandatory screening. Individuals will be advised of those tests at their initial consultation. This price list is available on request.

KNOWN DONATION - In known donation, the fee excludes the costs of the donors' consultation, screening tests, and sperm storage (if appropriate), which are the responsibility of the recipient couple.

TREATMENT USING DONOR EGGS

Please see separate price list.

TREATMENT WITH DONOR SPERM

Available for all treatments, including IUI, IVF, Egg Recipient. Donor sperm costs vary depending on the amount purchased from a Donor Bank.

Genetic Screening

PGD

Please telephone for details.

PGS (Pre-implantation genetic screening)

8 (b4) 9 Package

Elective Freeze cycle (IVF & Freeze) Does not include transfer.	4300
--	------

+ PGS package (full chromosome screening following IVF cycles carried out within 9 months of first cycle) - Analysis of up to 8 embryos.	2950
---	------

Cost per sample biopsied after 8 embryos	350
--	-----

Each Subsequent PGS cycle within the 9 months Elective Freeze (IVF & Freeze) Does not include transfer.	4300
--	------

Subsequent Biopsy fee	570
-----------------------	-----

Freezing and Storage

EGGsafe

With the criteria of maximum 20 eggs, under 36 yrs, under BMI 35, AFC of 14 and AMH of 15.	5500
--	------

SEMEN FREEZING

Semen freeze and storage - up to 1 year, per sample	500
---	-----

EGG FREEZING

Collection, freezing and storage of eggs (1 year)	3000
---	------

EMBRYO FREEZING

Embryo freeze and storage - up to 3 years	800
Additional storage period of semen/eggs/embryos (up to 1yr)	500

TRANSFER OF FROZEN EMBRYOS

Transfer of frozen embryos	1450
----------------------------	------

Beacon CARE Fertility Fee Schedule

DRUGS

Medication for fertility treatments is usually covered under the high tech scheme for patients registered under the Drugs Payment Scheme.

TREATMENT CANCELLATION POLICY

€

Occasionally treatment cycles are postponed.

If a cycle is cancelled because a patient fails to respond or over responds to stimulation, then the amount payable by the patient will be as follows:

Frozen Embryo Replacement, IUI

Cancelled at monitoring stage 500

IVF

Cancelled at monitoring stage 750

IVF with Donated Eggs in the UK

Cancelled at monitoring stage 750

If a treatment is cancelled post monitoring but before embryo replacement then a refund will be paid to the patient as follows:

Failed egg recovery 600

Failed fertilisation/cleavage 520

Failed frozen embryo thaw 600

Payment Options

In order to keep costs down, patients are kindly asked to pay consultation fees on the same day.

Treatment fees must be paid in full on the first day of monitoring, failure to complete payment at that time may jeopardise treatment.

Cash, cheques or credit cards are accepted, personal cheques can be accepted up to the value of the guarantee card. Our preferred method of payment is by debit card (no charge) or credit card (1.5% charge).

Beacon CARE Fertility Fee Schedule

Egg Donation Cycles - Satellite to CARE in the UK

FEE PAYABLE TO BEACON CARE FERTILITY

€

Satelliting Fee

€1,200

FEES PAYABLE TO CARE

£

Registration fee (non-refundable, only due on first cycle)

£495

HFEA fee

£80

Cycle fee

Exclusive option (all eggs from one altruistic donor)

£8,836

Shared option (two recipients matched to an altruistic donor)

£5,350

CAREmaps

£775

Blastocyst

£412

ICSI

£1,144

Embryo freeze and storage

(up to 3 years)

£545

Semen freeze and storage

(up to 3 years)

£410

Please note: £750 will be deducted from UK invoice for monitoring at Beacon CARE

FROZEN EMBRYO REPLACEMENT CYCLES

£

Fee payable to CARE

£1,295

TREATMENT CANCELLATION POLICY

£

Occasionally treatment cycles are postponed. If a cycle is cancelled because a patient fails to respond or over responds to stimulation, then the amount payable by the patient will be as follows:

Frozen embryo replacement

Cancelled at monitoring stage

£465

IVF with donated eggs (patients will be charged for drugs used by the donor)

Cancelled at monitoring stage

£565

If a treatment is cancelled post monitoring but before embryo replacement then a refund will be paid to the patient as follows:

Failed egg recovery (plus HFEA fee refund)

£455

Failed fertilisation/cleavage

£395

Failed frozen embryo thaw (plus HFEA fee refund)

£600

Beacon CARE Fertility Fee Schedule

Chromosome Screening by PGS, Translocations & PGD

This is a schedule of the main costs involved for patients wishing either Pre-Implantation Genetic Screening (PGS), Preimplantation Genetic Diagnosis (PGD) or translocation screening. If you are unsure of which charges apply to you, please speak to us for clarification.

CONSULTATION - one or other required		€
Initial Consultation for PGS or Translocation		175
Initial PGD Consultation Package		250
PRE-TREATMENT ASSESSMENT - required for all patients		
Screening blood tests per partner (HIV, Hep B, Hep C)		168
Semen Assessment package		150
Detailed pre-treatment scan (including antral follicle count)		110
Required for all cases		
Elective Freeze (IVF & Freeze) - does not include transfer		4300
ICSI		400
ADDITIONAL COST FOR PRE-IMPLANTATION GENETIC SCREENING		
PGS package (full chromosome screening following IVF cycles carried out within 9 months of first cycle) - Analysis of up to 8 eggs/embryos.		2950
Cost per sample biopsied after 8 embryos		350
Please note: should biopsy be undertaken but PGS is not performed for any reason the charge applied		1200
<i>Each Subsequent PGS cycle within the 9 months:</i>		
Biopsy fee		570
PGS screening per egg/embryo in excess of 8		300
PGS screening per additional test of any egg/embryo separate from main run		350
ADDITIONAL COST FOR PRE-IMPLANTATION GENETIC DIAGNOSIS		
PGD for single gene disorder		5490
Please note that a non-refundable registration fee of €1920 is payable when samples are taken for probe development on the first cycle. The balance being payable prior to treatment.		
PGD for two gene disorders		7340
PGD for single gene disorder and HLA Matching		7340
Please note that a non-refundable registration fee of €3450 is payable when samples are taken for probe development on the first cycle. The balance being payable prior to treatment.		
ADDITIONAL COST FOR TRANSLOCATION SCREENING		
Embryo translocation screening of up to 8 samples		3520
Thereafter costs per sample		390
If translocation screening is required in addition to either Chromosome Screening or PGD, this needs to be discussed with your consultant		
Transfer of frozen embryos		1450

Main Centres

Birmingham	Tel. +44 (0) 121 455 9334
Dublin	Tel. + 353 (0) 1 293 2955
London	Tel. +44 (0) 20 7616 6767
Manchester	Tel. +44 (0) 161 249 3040
Northampton	Tel. +44 (0) 1604 601 606
Nottingham	Tel. +44 (0) 115 852 8100
Sheffield	Tel. +44 (0) 114 258 9716
Tunbridge Wells	Tel. + 44(0) 1892 614 110



www.beaconcarefertility.ie